

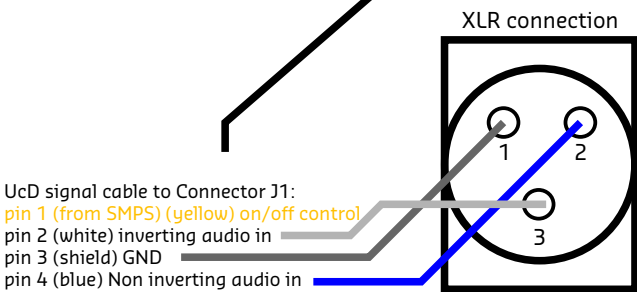
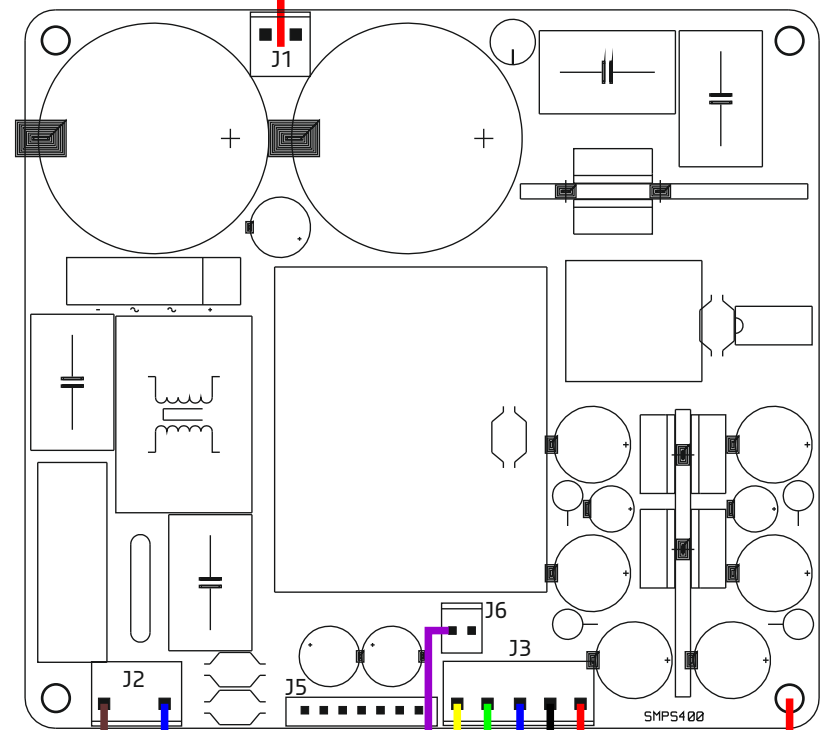
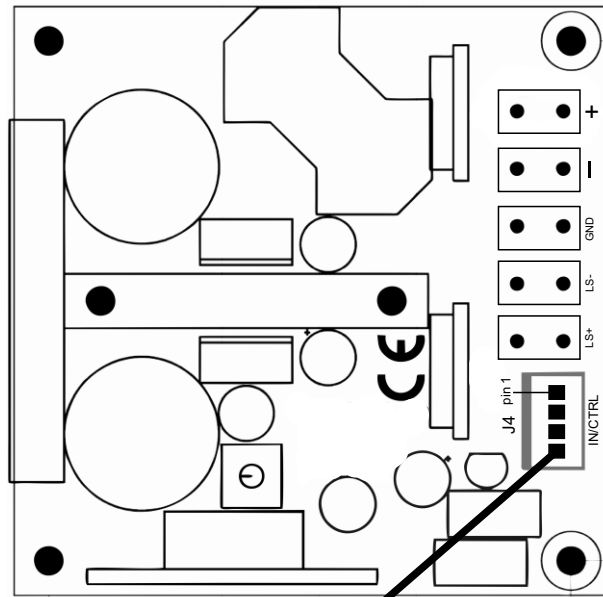
wiring schematics: UcD180 + SMPS400A180

Amplifier: UcD180HG
 SMPS: SMPS400A180
 Cables used: SMPS400 cable set/UcD signal cable

Always refer to the datasheets when building an amplifier and working with high voltage!

Drawings in this document are not to scale!

ONLY use jumper for 115V!!



mains!

J5 is not needed in this application.

Use metal spacer!

Do Not Use
Cut wire at the connector!!